

AUSA Global Force Symposium 2017



US Army Space and Missile Defense Command/Army Forces Strategic Command

Mr. Richard P. De Fatta, SES
Director,
Future Warfare Center

Multiple Responsibilities

Primary Mission Areas

Space and Global Missile Defense

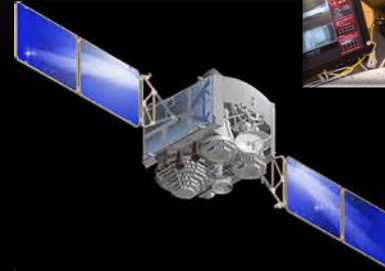
Functions

Operations

Future Capability Development

Research & Development

- Science and Technology

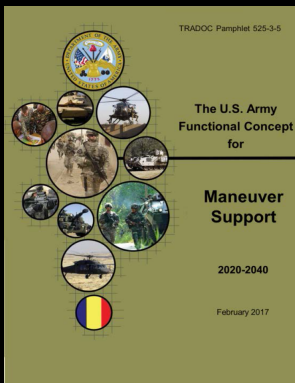
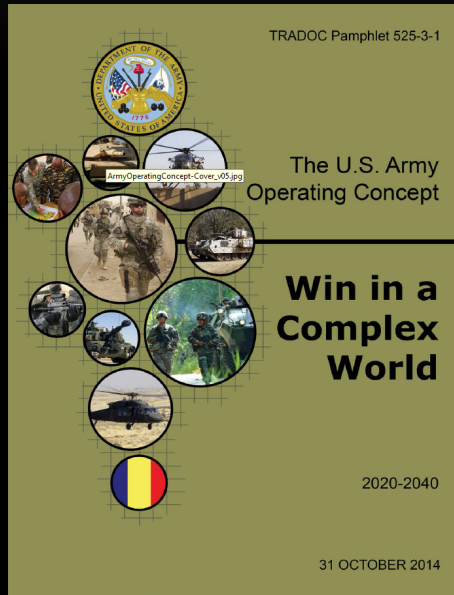


A Global Command



The Sun Never Sets...

STRATEGIC DRIVERS



The Operational Environment

Changes in the Character of War

**Lethal, Contested, Complex
Terrain...Degraded Operations**



Adversaries, including super empowered individuals with access to WME, cyber, space and NBC



Contested in all domains, increased lethality, enabled by autonomy, robotics and AI ... the potential for overmatch



Operations among populations in complex terrain...including dense urban areas

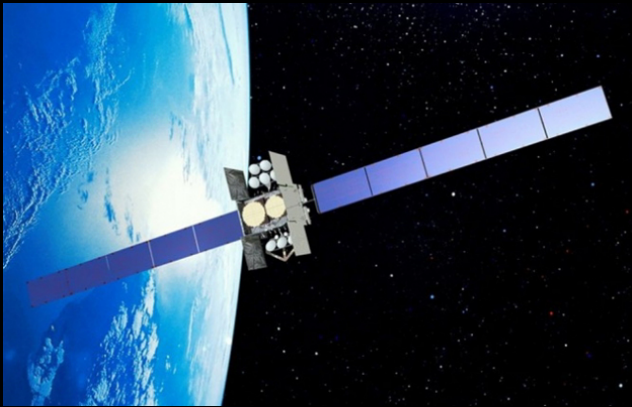
**Systems Warfare, Preclusion,
Sanctuary, Isolation and Reflexive
Control.**



Increased speed of human interaction, events and action ...rapid proliferation of capabilities, constantly co evolving

Potential to be Out-gunned, Out-ranged, Out-protected, Outdated, Out of Position ...Out of Balance

OPERATIONAL CHALLENGES IN SPACE



Evolving Threat Trends

Ballistic Missiles



Land Attack Cruise Missiles



Hypersonic Glide Vehicles



Rocket, Artillery, Mortars (RAM)

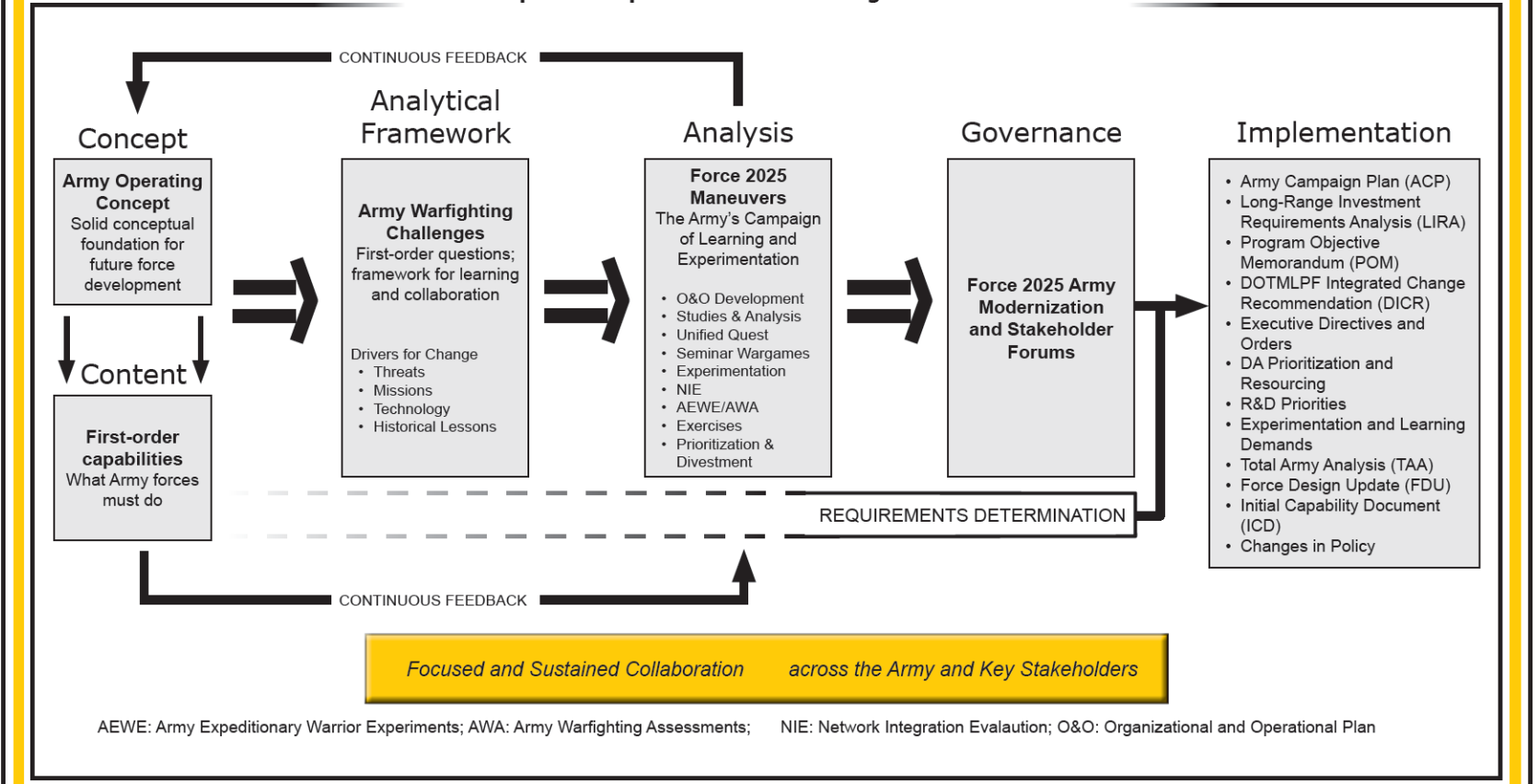


Unmanned Aerial Vehicles

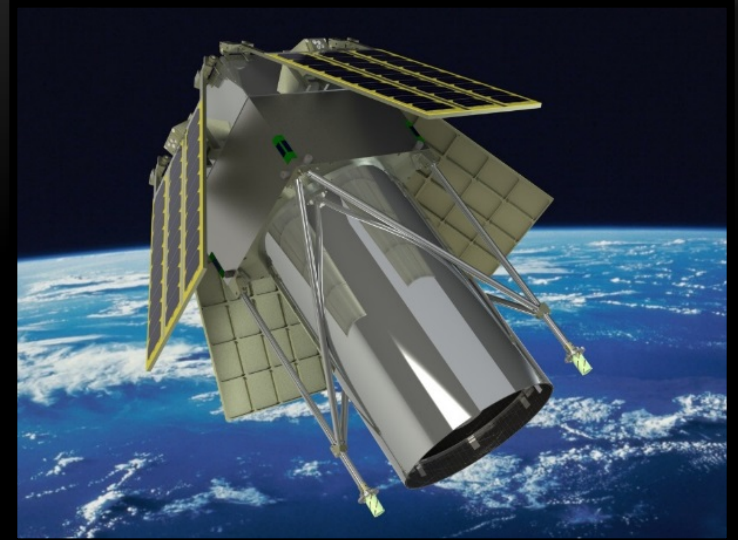


WHAT ARE WE DOING?

Concepts to Capabilities: Building the Future Force



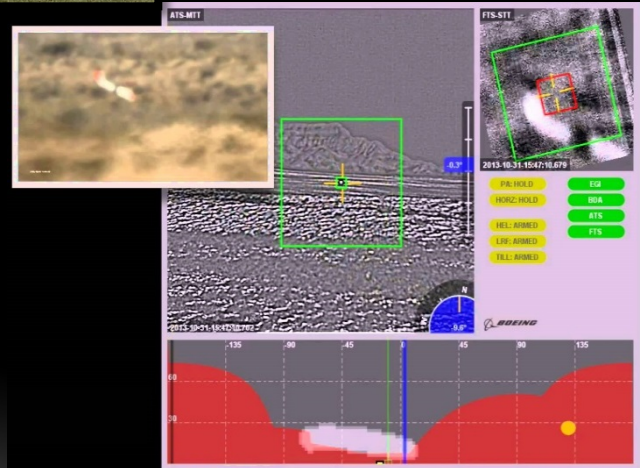
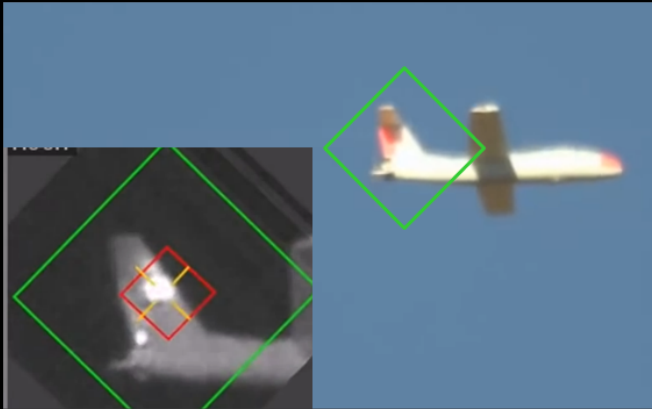
SPACE RESEARCH & DEVELOPMENT



MISSILE DEFENSE



HIGH ENERGY LASER



Multiple Responsibilities

Primary Mission Areas

Space and Global Missile Defense

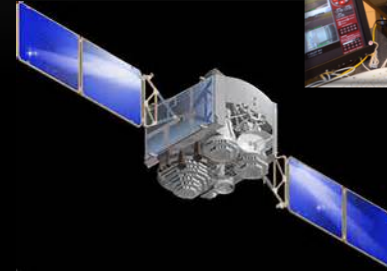
Functions

Operations

Future Capability Development

Research & Development

- Science and Technology





THANK YOU